

NATURE WALK

Grimsby Wetlands & Fifty Point Conservation Area, 624 Winston Rd, Grimsby ON



Observation Tower

The Grimsby Wetlands are the largest green space on the south shore of Lake Ontario. They include the Fifty Point Conservation Area (a 420-acre significant site for breeding and migrating birds), the Winona Rifle Range, the former Biggar Sewage Lagoon, and the radio tower lands. They straddle the border of Hamilton and Grimsby. The completed two-storey wildlife observation structure (in the wetlands) has a radio tracking tower that uses the specialized Motus program to collect data on migrating creatures.

The Fifty Point Complex reaches out into Lake Ontario by about 1.6 km. Its location makes it a significant “green island” for wildlife to live.



Painted Turtles



Observation Tower



Tree Swallows



Barn Swallow



Virginia Rail



Alder Flycatcher



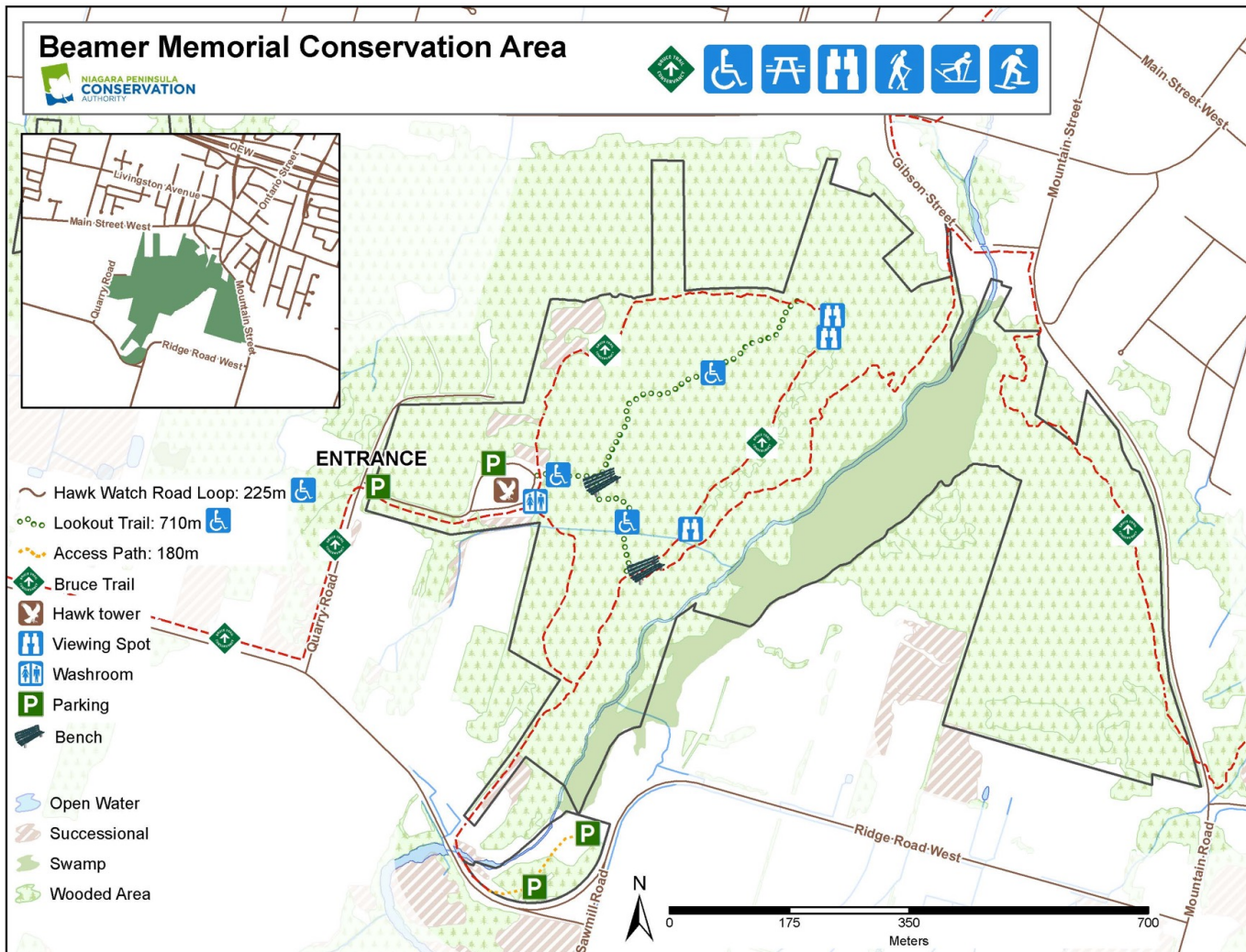
Black-Throated Warbler



Red Winged Blackbird

NATURE WALK

Beamer Memorial Conservation Area, 28 Quarry Rd, Grimsby, ON,



Watch Tower

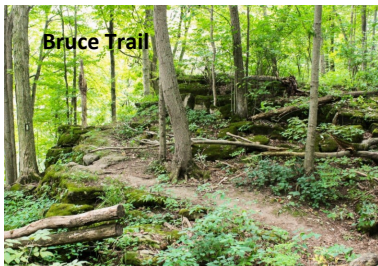
As part of the internationally designated Niagara Escarpment Biosphere Reserve, the Beamer Memorial Conservation Area watch tower offers one of Niagara's most breathtaking and panoramic views of the Niagara Escarpment and Lake Ontario.

The area is renowned as the best vantage point in the Niagara Peninsula to observe the annual spring hawk migration. Since 1975, birdwatchers have been monitoring the annual spring migration of hawks, eagles, falcons, and vultures over the Niagara Peninsula. Take a walk along the scenic Lookout and Bruce Trails and soak up the picturesque views of the 40 Mile Creek Valley, the Lake Ontario shoreline and the escarpment ridge from one of our viewing areas. Try the 4.2-km loop trail – it is considered a moderately challenging route taking an average of 1 h 8 min to complete. This is a very popular area for birding, hiking, and snowshoeing. The trail is open year-round and is beautiful to visit anytime.

Kestrel



Bruce Trail



Eastern Towhee

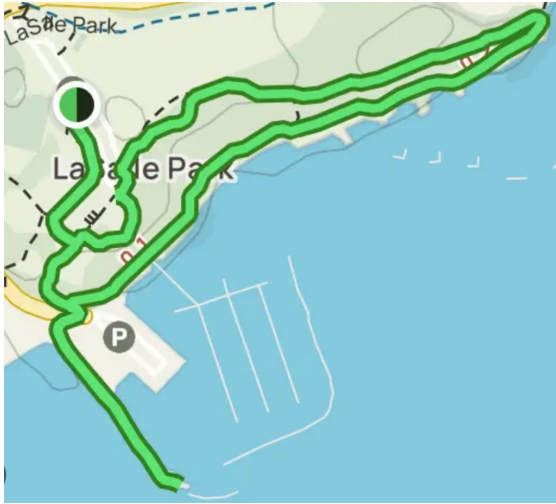


Scarlet Tanager



NATURE WALK

Lasalle Park/Marina, 831 Lasalle Park Road, Burlington ON



Lasalle is a protected harbour nestled on the north shore of Burlington Bay on the waterfront trail. Great place to check for wintering birds, e.g., Bald Eagles, Great Scaup, Common Goldeneye, Bufflehead, Common Merganser & Trumpeter Swans. Songbirds are plentiful during spring and fall migration. Year-round you can find, Mute Swans, Mallards, Canada Geese, Chickadees, Blue Jays, Woodpeckers, Owls, and Cardinals. The woodland trail (and boardwalks) along the Bay is an easy, short walk and wheelchair accessible, weather permitting. In addition, there are plenty of benches along the way to rest and view the harbour. Squirrels and chipmunks are always begging for handouts.



Mute Swan



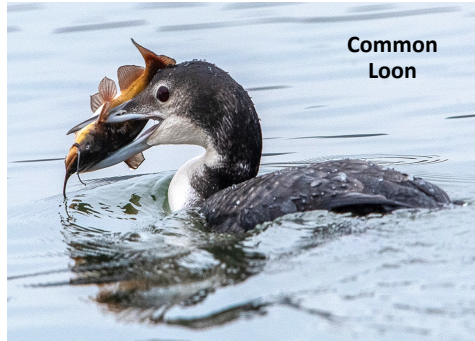
Bald Eagle



Screech Owl



Brown Morph Squirrel



Common Loon



Merganser



Trumpeter Swan



Chipmunk



Stiff-tailed Duck

NATURE WALK

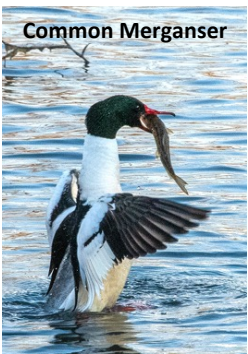
**Dufferin Islands, Niagara Falls ON
6345 Dufferin Isle Rd, (off Niagara Parkway)**



The construction of the Ontario Power Generating (OPG) Station in the early 1900s shaped the geographical features of Dufferin Islands. The fill from the construction was used to create new islands. The OPG Station, located just north, drew its 12,000 cubic feet of water per second from the Dufferin Islands area and was carried two kilometres for use. The OPG Station ceased operations in 1999 and the building was handed over to Niagara Parks.



Dufferin Islands is considered a woodland environment with a waterfall, paths and boardwalks, plus bridges joining the islands. Weather permitting, the park is wheelchair accessible – there are no stairs. Depending on the season, you can see a variety of birds, animals, and plants.



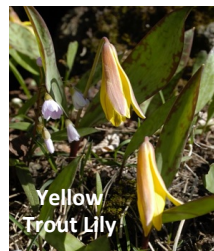
Common Merganser



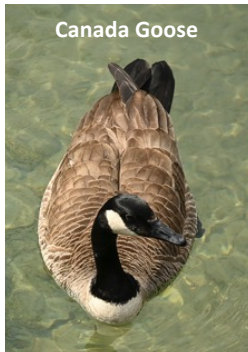
Blue Jay



Downy Woodpecker



Yellow Trout Lily



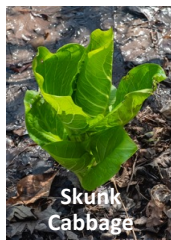
Canada Goose



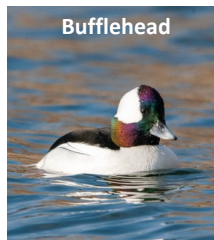
Cardinal



White Trillium



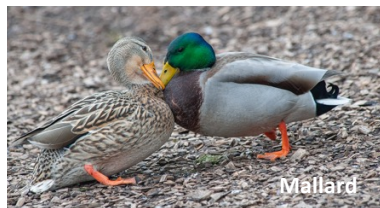
Skunk Cabbage



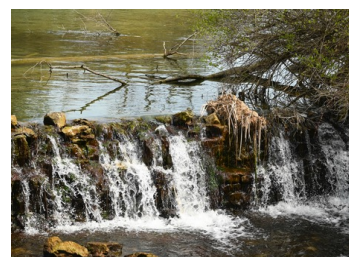
Bufflehead



American Widgeon



Mallard



NATURE WALK

RBG Laking Garden, 1221 Spring Gardens Rd, Burlington ON



Set on a fertile terraced plain that was once a market garden, the Laking Garden is home to RBG's herbaceous perennial collections. The garden opened in 1957. It Showcases 2,425 types and 60,768 individual plants.

Take time to explore how early Ontario gardens mixed edible, medicinal and ornamental plants. Keep your eyes open for birds and animals in the garden as well.

Visit the gardens during all seasons to see the various plant collections.



Magnolia Tree



Musk Rose



Formal Hedges



Lilac Shrub



Salvia



Peony



Poppy



Iris



Iris



Iris



Iris



Snapping Turtle



Ground Hog



NATURE WALKS

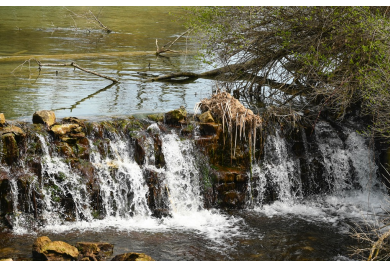
These are just some of the areas that you can visit to experience nature. Share the experience with your friends and bring a camera to capture some memorable moments.

Grimsby Wetlands Grimsby: viewing tower, marsh & ponds, birds,, animals, grasses. Partial wheelchair accessible.



Beamer Conservation Area Grimsby: raptor watch tower, woodland, birds, animals, flowers. Partial wheelchair accessible (weather permitting).

Lasalle Park Burlington: boardwalk, birds, animals, woodland, wildflowers. Wheelchair accessible.



Dufferin Islands, Niagara Falls: islands, boardwalks, ponds, birds, animals, flowers. Wheelchair accessible.

Royal Botanical Gardens Hamilton: formal gardens, greenhouse, arboretum, flowers. Wheelchair accessible.

